

REMOTE RACKING SYSTEM

SPECIFICALLY DESIGNED FOR:

STR SAFE-T-RACK[®]

by Remote Solutions LLC

Because Distance is the Best Arc Flash Protection

BREAKER: Emax E1-E6

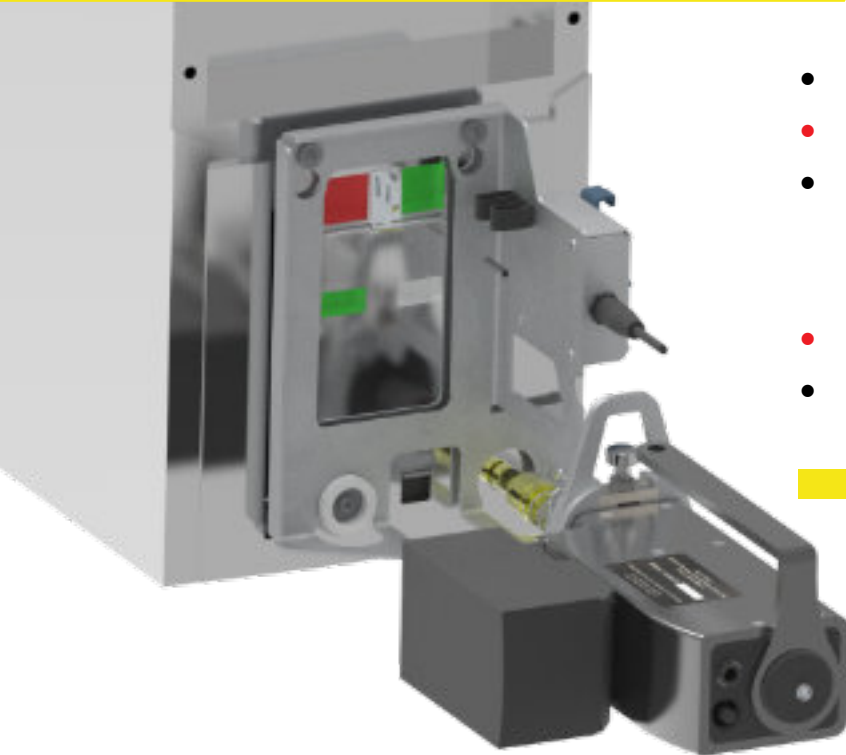
MANUFACTURER: ABB

VOLTAGE: 480V

CURRENT: 800A - 6000 A

WILDCAT

086



- **LIGHTWEIGHT AND PORTABLE**
- **EASY-TO-USE HANDHELD CONTROLLER**
- **STANDARD 50' CABLE (WITH OPTIONAL EXTENSIONS) ASSURES SAFE DISTANCE FROM BREAKER DURING RACKING SEQUENCE**
- **ERROR RECOVERY & EMERGENCY STOP CAPABILITY**
- **MOUNTING HARDWARE INSTALLED ON BREAKER**

PARTS & ACCESSORIES

Smart Drive Bracket,
Tool Adapter Assembly, Motor Drive
Unit, and 50' Communications Cable

All of our products are designed, built to spec, and shipped from our state-of-the-art facility in Tucson, Arizona. Each product is created and tested by our knowledgeable team of designers and engineers to fit each individual breaker, cubicle door, switchgear, or variant. When you choose Safe-T-Rack, you're getting the safest, most reliable product on the market.

**OUR TEAM GOES TO WORK EVERY DAY
TO MAKE SURE YOUR TEAM
COMES HOME SAFE.**



REMOTE SOLUTIONS, LLC

2475 N. Jackrabbit Avenue • Tucson, AZ 85745 • (520) 628-4378

FAX (520) 628-4568 • www.Safe-T-Rack.com





WILDCAT 086

OPERATION MANUAL

BREAKER: Emax E1-E6

MANUFACTURER: ABB

VOLTAGE: 480V

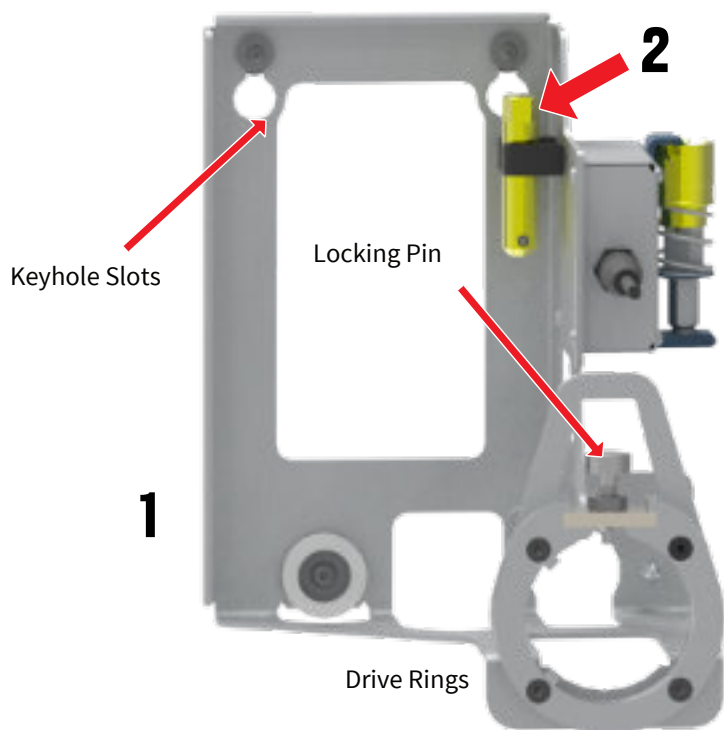
CURRENT: 800A - 6000 A

SAFETY FIRST

Always observe safety precautions and use personal protective equipment (PPE) as required by local site procedures. This equipment is designed to further minimize exposure risk to the operator.

PARTS LIST

1. Smart Drive Bracket (SDB)
2. Intermediate Tool Adapter (ITA)
3. Tool Adapter (TA)
4. Motor Drive Unit (MDU)
5. Two (2) batteries with charger
6. One (1) SR-U Handheld Controller (HHC)
7. 50' communication cable*
8. Polymer Storage Case



CUBICLE KIT REQUIRED

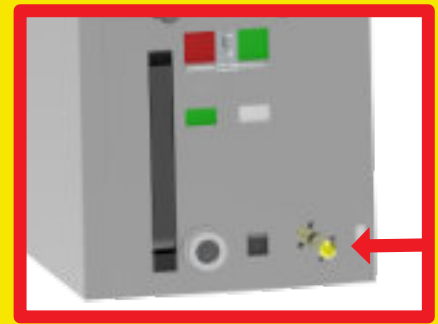
This application requires an installed cubicle kit onto which the SDB is mounted. For questions or installation requests, contact Remote Solutions LLC.



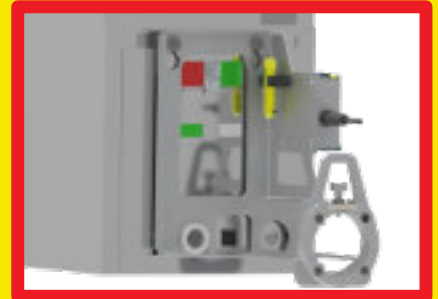
SETUP SEQUENCE

SMART DRIVE BRACKET (SDB) & INTERMEDIATE TOOL ADAPTER (ITA)

1. Confirm that cubicle kit has been installed on breaker and that both breaker and Smart Drive Bracket (SDB) are labeled with WILDCAT color code.
2. Remote Intermediate Tool Adapter from storage clip on SDB.
3. Open racking port and insert ITA into breaker.
4. Align Smart Drive Bracket with shoulder bolts, and suspend bracket from breaker, ensuring that ITA is centered within drive rings.



ITA INSERTED INTO RACKING PORT



SDB SUSPENDED FROM SHOULDER NUTS SO THAT DRIVE RINGS ALIGN WITH ITA

MOTOR DRIVE UNIT (MDU) & TOOL ADAPTER (TA)

1. Remote Tool Adapter (TA) from storage clip on SDB.
2. Using Quick Change Coupling, insert TA into Motor Drive Unit (MDU) and release collar. Assure that TA is secured before proceeding.
3. Attach fully charged battery to MDU.
4. Set the locking pin on SDB to an open position and insert MDU & attached TA into the drive rings on SDB.
5. Align and engage the MDU with ring dogs on the drive rings. Once aligned, release locking pin to hold MDU in place. Assure that SDB is secured before proceeding.
6. Connect SDB communication cable to port in MDU.
Note: red line on communication cables indicates correct alignment with port.



MDU WITH ATTACHED TAA



MDU WITH ATTACHED TAA ENGAGED WITH DRIVE RINGS, AND LOCKING PIN - READY FOR SDB AND HHC COMMUNICATION CABLES

HANDHELD CONTROLLER (HHC)

1. Connect 50' Communication Cable to second port in MDU.
2. Connect other end of 50' Communication Cable to Handheld Controller (HHC)*.
3. Move a safe distance away from the breaker.

**Note: Multiple cables can be used to increase safe distance from breaker. Additional cables sold separately. Contact Remote Solutions LLC for more information.*

POWER ON

1. Twist the E-Stop switch on HHC to activate the system.
2. Several screens will flash as unit powers up. Once HHC has powered up, **verify correct application screen is displayed.**

SYSTEM OPERATION

1. Follow the on-screen prompts to complete racking procedure. Navigate selections using perimeter buttons on HHC (backlit in green). “Right” and “Left” will advance through menu. “Up” and “Down” will toggle between options on screen.
2. Navigating HHC in this manner, select current location and desired destination of breaker. When selection is highlighted, click center button (backlit in red) to confirm selection. **This will initiate the racking process.**
3. System will perform action as selected, displaying progress on screen.
4. Upon successful operation, HHC will display a completed racking screen.

POWER DOWN & STORAGE

1. Power down the unit by pressing the E-Stop button. Remove TA from MDU and return it to storage clip on SDB. Remove battery from MDU.
2. Unplug power cord and HHC communication cord from SDB before using the locking pin to release MDU from bracket.
3. Stow 50' Communication Cable, HHC, MDU, and batteries in storage case.
4. Remove SDB from cubicle and set aside.
5. Remove ITA from breaker and return it to storage clip on SDB. Store SDB in provided polymer case.

BATTERY REQUIREMENT

Note: System will ask to verify battery level. Check battery level is at 4 bars before attempting to rack. If racking multiple breakers, please verify battery level between each racking attempt.



CARE & MAINTENANCE

To ensure longevity of the Portable Kit and SDB, store the tools in the provided polymer case in a dry, temperate environment. The tools are weather resistant but should be used with care in rain and snow.

Remote Solutions reserves the right to change or update product or documentation without prior notice.

ERROR RECOVERY

If a problem occurs, programmed recoveries will happen automatically and the system will attempt to recover the breaker to a known position.

When racking in/out, if an obstruction or mechanism failure occurs, the system will attempt to recover the breaker to a safe position. Actions will be displayed on HHC with an asterisk (*) in front of them. When the HHC has completed recovery operations, HHC will display current expected location of the breaker. Note the expected location and approach the breaker with caution. Determine cause of the failure and remedy the situation prior to attempting additional remote racking.

NOTE: Attempting to stop or shutting down the system mid-process once it has started is not recommended, as this will leave the breaker in an unknown position. The Remote Racking System will only operate from known positions.



EMERGENCY STOP

The red E-Stop button on the HHC serves as both the power and Emergency Stop button. If an E-stop is initiated, the system will shut down. Operator must then manually recover the breaker to a known position. Follow all safety procedures and wear appropriate PPE when recovering a breaker manually.

For any questions, concerns, information, or missing/replacement parts, contact Remote Solutions below or follow the QR link to our website.



SR SAFE-T-RACK
by Remote Solutions LLC

2475 N. Jackrabbit Avenue • Tucson, AZ 85745 • (520) 628-4378

FAX (520) 628-4568 • sales@Safe-T-Rack.com • www.Safe-T-Rack.com